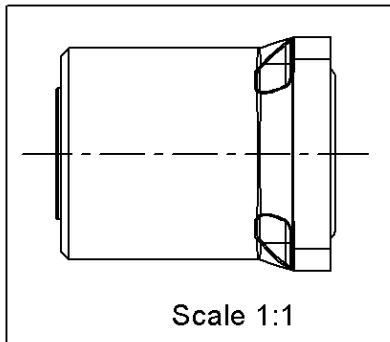
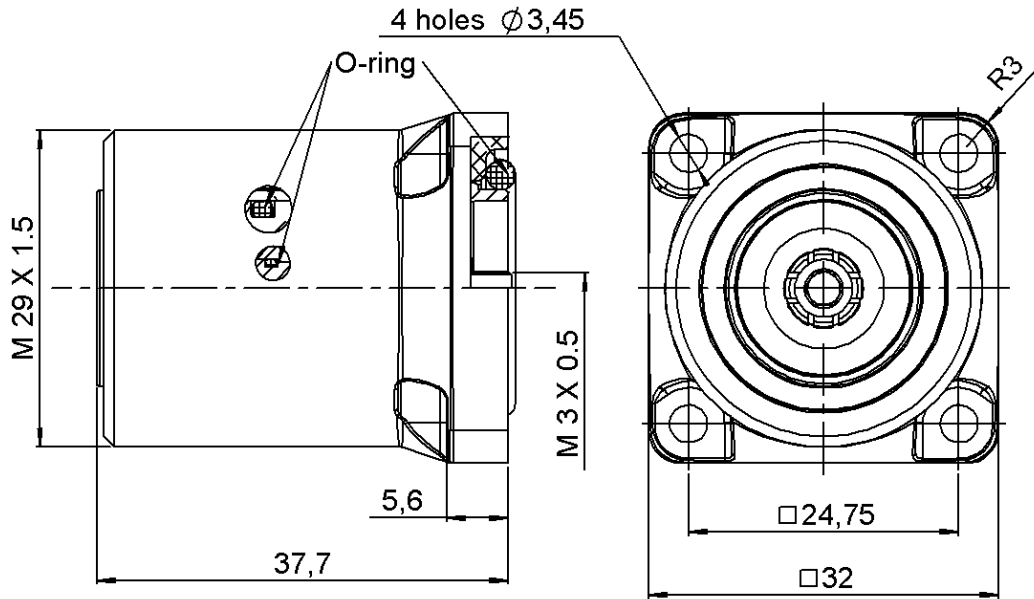


COMPOSITE SQUARE FLANGE JACK RECEPTACLE-PANEL SEAL

**R187.413.100**

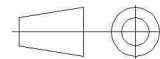
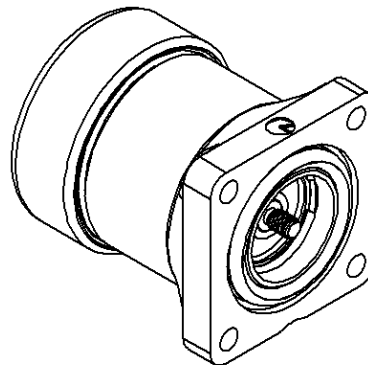
WATERPROOF INTERFACE-FRONT MOUNTING M3 S CREW

S : 7/16 COMPOSITE



**PANEL CUT OUT**

	mm	
	Maxi	mini
A	16.2	16
B	3.7	3.6
C	24.8	24.7



All dimensions are in mm.

COMPONENTS	MATERIALS	PLATING (µm)
BODY	COMPOSITE MATERIAL - BLACK	-
CENTER CONTACT	BRONZE	SILVER 5 OVER COPPER 0.5
OUTER CONTACT	BRASS	BBR 0.5 OVER SILVER 3
INSULATOR	PTFE	-
GASKET	SILICONE RUBBER	-
OTHERS PARTS	-	-
-	-	-
-	-	-

Issue : 0834 B

In the effort to improve our products, we reserve the right to make changes judged to be necessary.



COMPOSITE SQUARE FLANGE JACK RECEPTACLE-PANEL SEAL

**R187.413.100**

WATERPROOF INTERFACE-FRONT MOUNTING M3 S CREW

S : 7/16 COMPOSITE

**PACKAGING**

**SPECIFICATION**

Standard	Unit	Other
<b>10</b>	<b>'W' option</b>	<b>Contact us</b>

**ELECTRICAL CHARACTERISTICS**

**ENVIRONMENTAL**

Impedance **50** Ω  
 Frequency **0-7.5** GHz  
 VSWR **\*1.06 + 0,0000** x F(GHz) Maxi  
 Insertion loss **0.05** √F(GHz) dB Maxi  
 RF leakage - ( **NA** - F(GHz)) dB Maxi  
 Voltage rating **1400** Veff Maxi  
 Dielectric withstanding voltage **2700** Veff mini  
 Insulation resistance **10000** MΩ mini

Operating temperature **-40/+85** ° C  
 Hermetic seal **NA** Atm.cm3/s  
 Panel leakage **IP67**

**OTHER CHARACTERISTICS**

Assembly instruction

Others :

\*VSWR : 1.06 between DC to 3 GHz  
 \*VSWR : 1.1 between 3 to 7.5 GHz  
 PIM3:-125dBm under 2 carriers of +43dBm

Flammability rating : UL94-V0  
 UV resistance : IEC 68-2-5 (1000h@1250W/m<sup>2</sup>)

**MECHANICAL CHARACTERISTICS**

Center contact retention  
 Axial force – Mating end **200** N mini  
 Axial force – Opposite end **NA** N mini  
 Torque **NA** N.cm mini

Recommended torque  
 Mating N.cm  
 Panel nut N.cm

Mating life **500** Cycles mini  
 Weight **45,8000** g

Issue : 0834 B

In the effort to improve our products, we reserve the right to make changes judged to be necessary.

